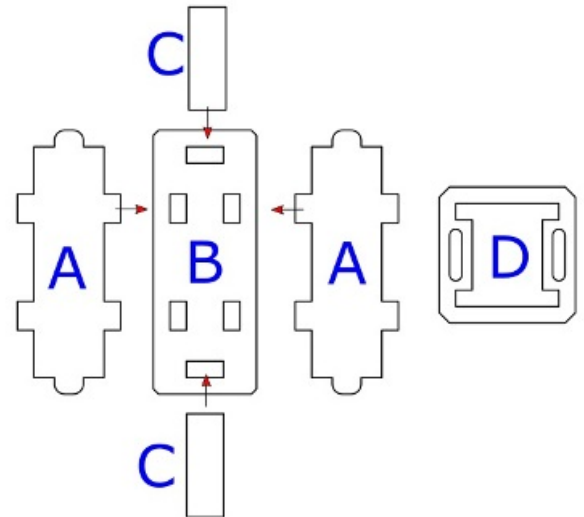


Assembly Guide for Low-lift Forklift Truck

Part List & Number of Pieces

Crate

- A - Crate sides - 2
- B - Crate Top & Bottom - 2
- C - Crate End Pieces - 2
- D - Crate Strapping / Reinforcement - 3

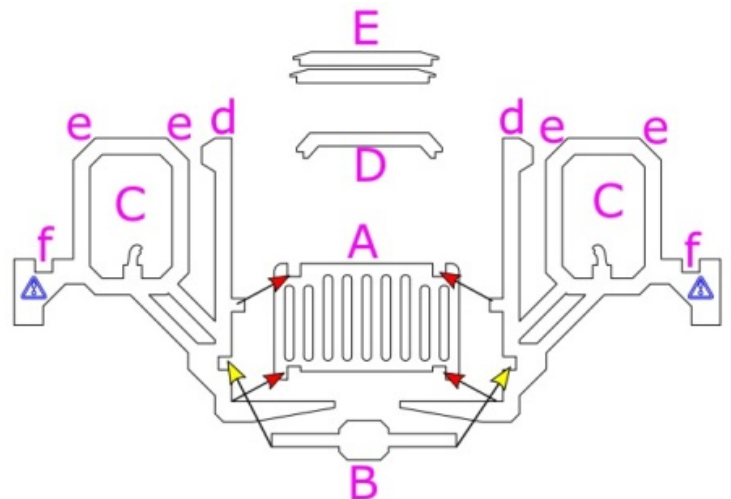


Method

1. Fit A into B as shown by arrows.
2. Attach second part B to open side.
3. Slide parts C into position.
4. Slip parts D onto the outer edges of the crate, spacing them as required.

Cage & Lift Assembly

- A - Lift backing structure - 1
- B - Lift cross brace - 1
- C - Left and right cage / lift assembly - 1 each
- D - Lift cross brace - Top - 1
- E - Cage cross braces - 2

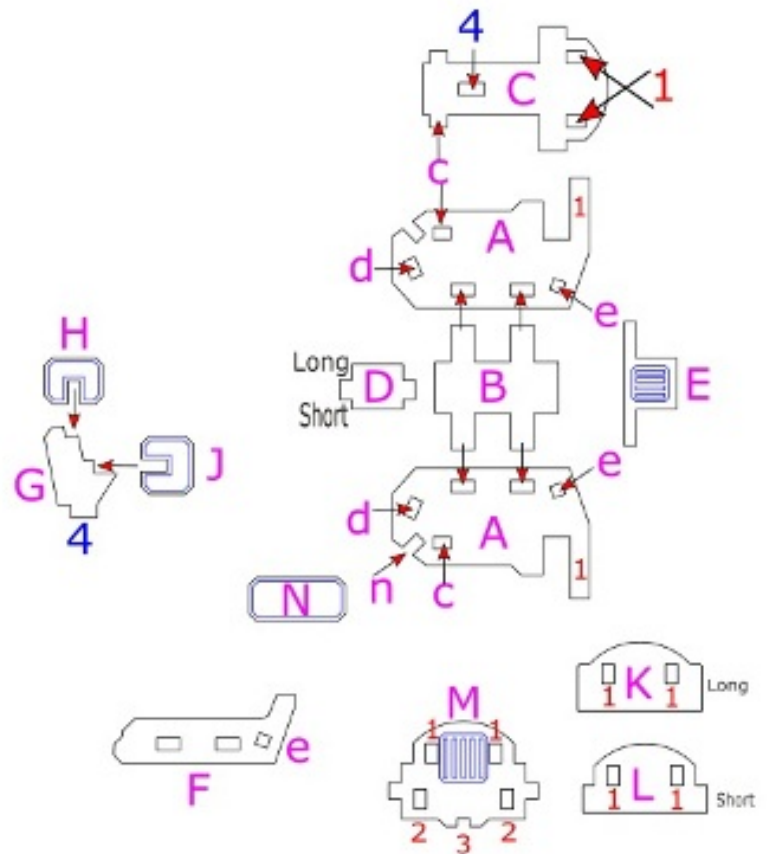


Method

1. Attach B to the two cage assemblies, as show by the YELLOW arrows. Do not glue this part yet, as it must be able to slide from side to side.
2. Attach Part A as shown by the RED arrows.
3. Centralise part B and glue in place.
4. Attach D to both sides of C, as shown by d.
5. Attach E to e on both sides of C.

Body Assembly

- A - Chassis sides - 2
- B - Chassis base - 1
- C - Chassis upper section - 1
- D - Chassis front plate - 1
- E - Chassis rear plate - 1
- F - Track spacer plates - 2
- G - Seat support - 1
- H - Seat backrest - 1
- J - Seat base - 1
- K - Counter-weight - 2
- L - Counter-weight - 1
- M - Engine top cover - 1
- N - Front floorboard - 1



Method

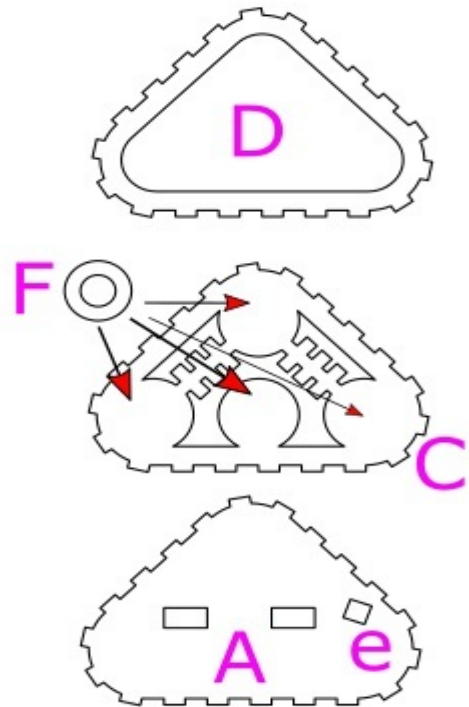
1. Attach A to B as shown by the RED arrows while simultaneously aligning E to A on both sides.
2. Attach D to A on both sides, taking note that the shorter side of D should face downwards.
3. Attach C to A, aligning C1 with A1. Carefully spread the two sides A apart to locate c at the front of the two sides A. Do not spread the sides too far, as you will damage the side plates.
4. Attach K to A, then L to A, and then the second K to A.
5. Attach M1 to A1.
6. Now attach track spacers F to B.
7. Attach seat base J, and seat backrest H to seat support G. Attach this assembly to C4.

Track Assembly

- A - Track inner plate - 2
- C - Track detail plate - 2
- D - Outer track - 2
- F - Wheel hubs - 8

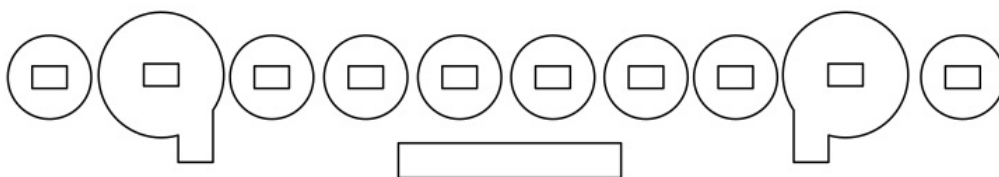
Method

1. Attach F to C as shown by RED arrows.
2. Attach C to A.
3. Attach D to C.
4. Attach the complete assembly to B from the body assembly diagram.



Fuel Tank

Assemble as per diagram below, and attach to engine top plate M from body assembly diagram.



Finally attach the cage and lift assembly, aligning slots Cf with M1 on the engine cover

